

I	-	109.06'	37°24'59"	71.22'	36.93'	69.96'	S.70°20'10"W	Q. OF STREET
J	-	84.06'	37°24'59"	54.89'	28.47'	53.92'	N.70°20'10"E	

S.89°02'39"W	411.01'	RIGHT WHOSE CHORD BEARS S.70°20'10"W 69.96'
S.0°35'21"E	138.00'	
S.89°02'34"W	110.00'	
S.0°35'21"E	26.12'	
S.88°52'38"W	152.93'	TO THE POINT OF BEGINNING.
		AREA = 6.59 ACRES

200

BASIS OF BEARING = THE LINE BETWEEN THE NORTHWEST CORNER AND THE NORTHEAST CORNER OF SECTION 1, T.14 S., R.9 E., S.L.B. & M. = S.89°51'36"E.

DATE 2-13-79 SURVEYOR *John P. Gottfredson*  
(See Seal Below)

OWNERS' DEDICATION

KNOW ALL MEN BY THESE PRESENTS THAT WE, ALL OF THE UNDERSIGNED OWNERS OF ALL OF THE PROPERTY DESCRIBED IN THE SURVEYOR'S CERTIFICATE HEREON AND SHOWN ON THIS MAP, HAVE CAUSED THE SAME TO BE SUBDIVIDED INTO LOTS, BLOCKS, STREETS AND EASEMENTS AND DO HEREBY DEDICATE THE STREETS AND OTHER PUBLIC AREAS AS INDICATED HEREON FOR PERPETUAL USE OF THE PUBLIC.

IN WITNESS WHEREOF WE HAVE HEREUNTO SET OUR HANDS THIS DAY OF Oct 16, A.D. 19 79

*James Jones*  
*Thomas R. Lott*

ACKNOWLEDGEMENT

STATE OF UTAH } S.S.  
COUNTY OF Lea

ON THE 16th DAY OF October, A.D. 19 79, PERSONALLY APPEARED BEFORE ME THE SIGNERS OF THE FOREGOING DEDICATION WHO DULY ACKNOWLEDGE TO ME THAT THEY DID EXECUTE THE SAME, MY COMMISSION EXPIRES June 22, 1981

NOTARY PUBLIC  
(See Seal Below)

ACCEPTANCE BY LEGISLATIVE BODY

THE COUNTY COMMISSION OF CARBON COUNTY STATE OF UTAH APPROVES THIS SUBDIVISION AND HEREBY ACCEPTS THE DEDICATION OF ALL STREETS, EASEMENTS, AND OTHER PARCELS OF LAND INTENDED FOR PUBLIC PURPOSES FOR THE PERPETUAL USE OF THE PUBLIC THIS 16 DAY OF October, A.D. 19 79

APPROVED Det. F. Bader ENGINEER (See Seal Below) ATTEST Norman Richard CLERK-RECORDER (See Seal Below)

BOARD OF HEALTH

APPROVED SUBJECT TO THE FOLLOWING CONDITIONS: None  
CITY-COUNTY HEALTH DEPARTMENT

PLANNING COMMISSION APPROVAL

APPROVED THIS 16 DAY OF October, A.D. 19 79, BY THE Thomas R. Lott CHAIRMAN, PLANNING COMMISSION

PLAT "A"

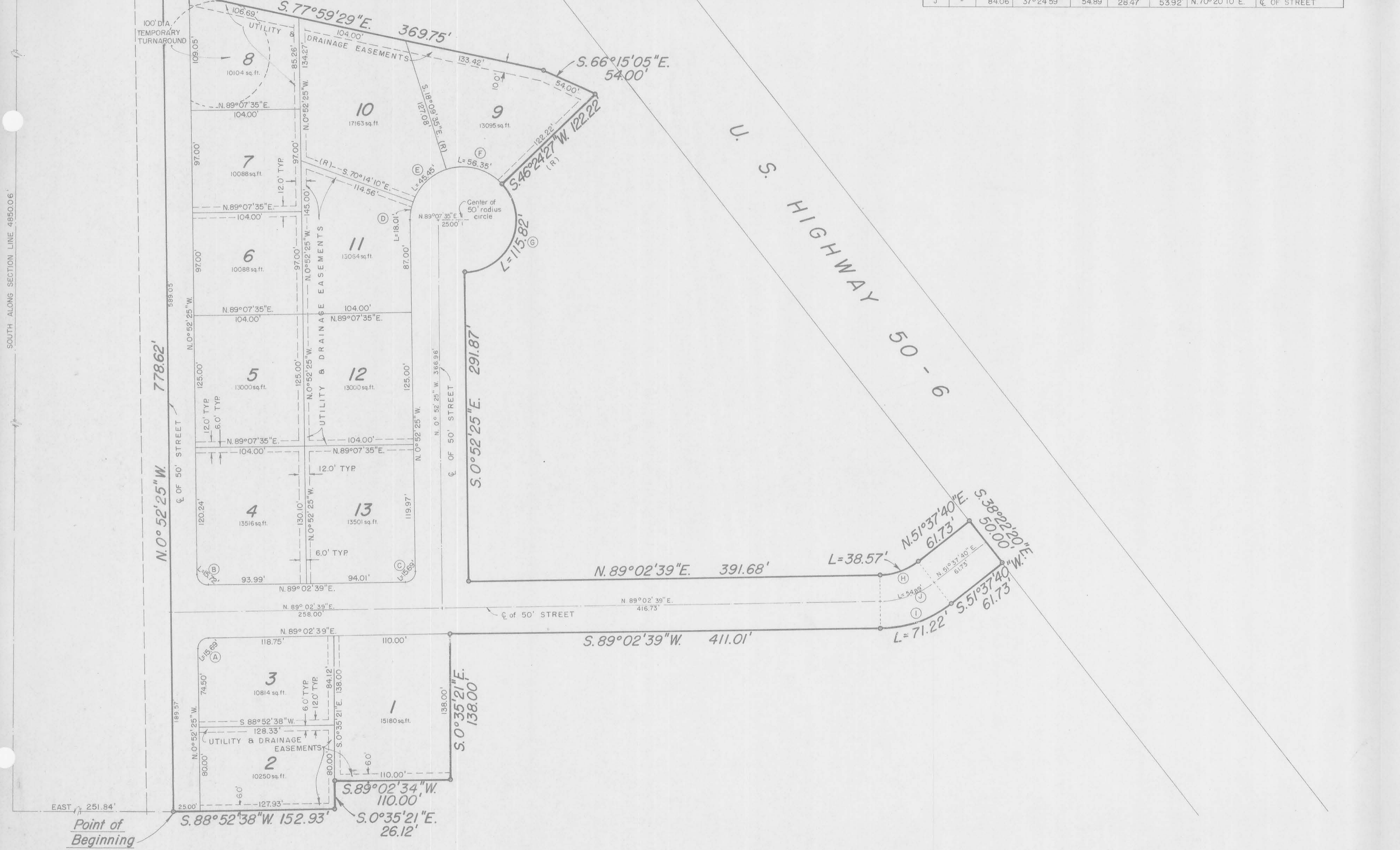
COUNTRY CLUB ESTATES

SUBDIVISION

11 CARBON COUNTY, UTAH

SURVEYOR'S SEAL: *Thomas R. Lott*  
Entry No. 151449  
Indexed 11  
Abstracted 11  
Rec. Fee 11  
OCT 16 2 04 PM '79  
3 PLATS  
200

prepared by  
GOTTFREDSON & JUESCHKE INC.  
Consulting Engineers & Land Surveyors  
Provo, Utah



SOUTH ALONG SECTION LINE 4850.06'

U. S. HIGHWAY 50 - 9

Point of Beginning